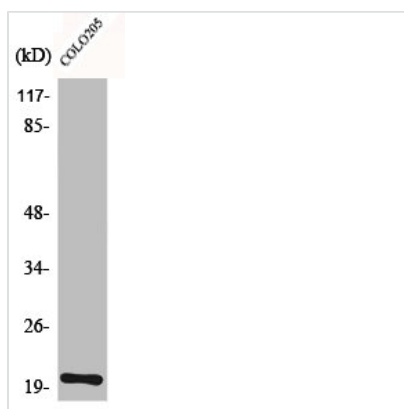




TRAPPC3 Antibody

Product Code	CSB-PA000993
Storage	Upon receipt, store at -20°C or -80°C. Avoid repeated freeze.
Uniprot No.	O43617
Immunogen	Synthesized peptide derived from the C-terminal region of Human BET3.
Raised In	Rabbit
Species Reactivity	Human, Mouse, Rat
Tested Applications	WB, IHC, ELISA; WB:1:500-1:2000, IHC:1:100-1:300, ELISA:1:5000
Form	Liquid
Conjugate	Non-conjugated
Storage Buffer	Liquid in PBS containing 50% glycerol, 0.5% BSA and 0.02% sodium azide.
Purification Method	The antibody was affinity-purified from rabbit antiserum by affinity-chromatography using epitope-specific immunogen.
Isotype	IgG
Alias	TRAPPC3; BET3; CDABP0066; Trafficking protein particle complex subunit 3; BET3 homolog
Immunogen Species	Homo sapiens (Human)
Target Names	TRAPPC3

Image



Western Blot analysis of Jurkat cells using BET3 Polyclonal Antibody

Usage

For Research Use Only. Not for use in diagnostic or therapeutic procedures.