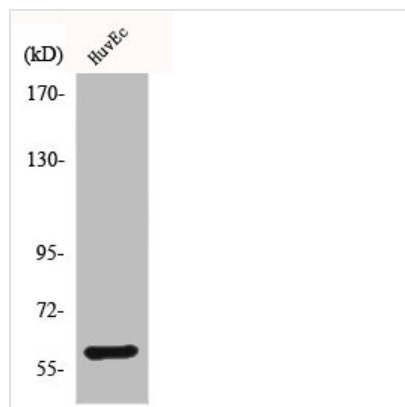




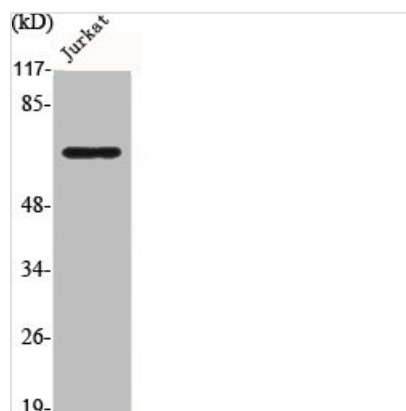
BMP2 Antibody

Product Code	CSB-PA001000
Storage	Upon receipt, store at -20°C or -80°C. Avoid repeated freeze.
Uniprot No.	P12643
Immunogen	Synthesized peptide derived from the Internal region of Human BMP-2.
Raised In	Rabbit
Species Reactivity	Human,Mouse,Rat
Tested Applications	WB, IHC, ELISA; WB:1:500-1:2000, IHC:1:100-1:300, ELISA:1:20000
Form	Liquid
Conjugate	Non-conjugated
Storage Buffer	Liquid in PBS containing 50% glycerol, 0.5% BSA and 0.02% sodium azide.
Purification Method	The antibody was affinity-purified from rabbit antiserum by affinity-chromatography using epitope-specific immunogen.
Isotype	IgG
Alias	BMP2; BMP2A; Bone morphogenetic protein 2; BMP-2; Bone morphogenetic protein 2A; BMP-2A
Immunogen Species	Homo sapiens (Human)
Target Names	BMP2

Image



Western Blot analysis of HuvEc cells using BMP-2 Polyclonal Antibody



Western Blot analysis of Jurkat cells using BMP-2 Polyclonal Antibody