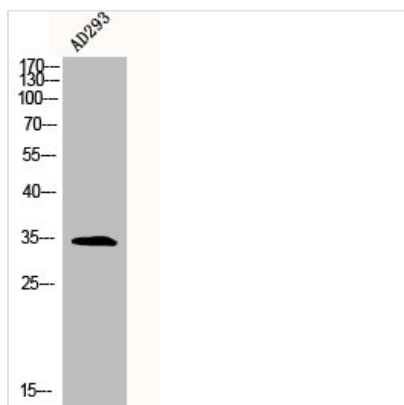




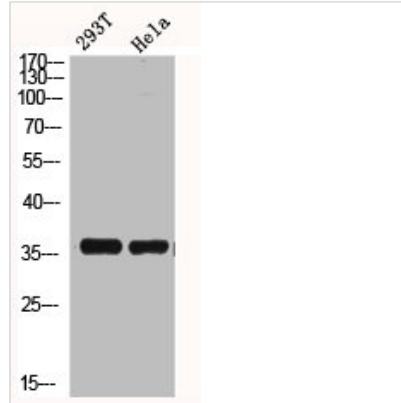
HMG20B Antibody

Product Code	CSB-PA001040
Storage	Upon receipt, store at -20°C or -80°C. Avoid repeated freeze.
Uniprot No.	Q9P0W2
Immunogen	Synthesized peptide derived from the N-terminal region of Human BRAF35.
Raised In	Rabbit
Species Reactivity	Human
Tested Applications	WB, IHC, IF, ELISA; WB:1:500-1:2000, IHC:1:100-1:300, IF:1:200-1:1000, ELISA:1:20000
Form	Liquid
Conjugate	Non-conjugated
Storage Buffer	Liquid in PBS containing 50% glycerol, 0.5% BSA and 0.02% sodium azide.
Purification Method	The antibody was affinity-purified from rabbit antiserum by affinity-chromatography using epitope-specific immunogen.
Isotype	IgG
Alias	HMG20B; BRAF35; HMGX2; HMGXB2; SMARCE1R; SWI/SNF-related matrix-associated actin-dependent regulator of chromatin subfamily E member 1-related; SMARCE1-related protein; BRCA2-associated factor 35; HMG box-containing protein 20B; HMG domain-
Immunogen Species	Homo sapiens (Human)
Target Names	HMG20B

Image



Western Blot analysis of AD293 cells using BRAF35 Polyclonal Antibody



Western Blot analysis of HELA 293T cells using BRAF35 Polyclonal Antibody

Usage

For Research Use Only. Not for use in diagnostic or therapeutic procedures.