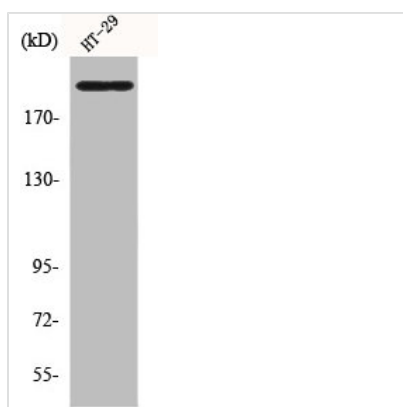




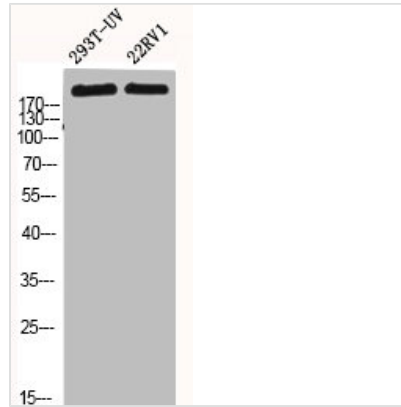
BRCA1 Antibody

Product Code	CSB-PA001042
Storage	Upon receipt, store at -20°C or -80°C. Avoid repeated freeze.
Uniprot No.	P38398
Immunogen	Synthesized peptide derived from Human BRCA1 around the non-phosphorylation site of S1423.
Raised In	Rabbit
Species Reactivity	Human,Rat
Tested Applications	WB, IHC, IF, ELISA; WB:1:500-1:2000, IHC:1:100-1:300, IF:1:200-1:1000, ELISA:1:5000
Form	Liquid
Conjugate	Non-conjugated
Storage Buffer	Liquid in PBS containing 50% glycerol, 0.5% BSA and 0.02% sodium azide.
Purification Method	The antibody was affinity-purified from rabbit antiserum by affinity-chromatography using epitope-specific immunogen.
Isotype	IgG
Alias	BRCA1; RNF53; Breast cancer type 1 susceptibility protein; RING finger protein 53
Immunogen Species	Homo sapiens (Human)
Target Names	BRCA1

Image



Western Blot analysis of HT29 cells using BRCA1 Polyclonal Antibody



Western Blot analysis of 293T-UV 22RV1 cells using BRCA1 Polyclonal Antibody