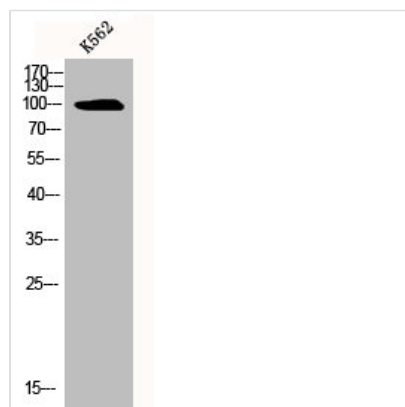




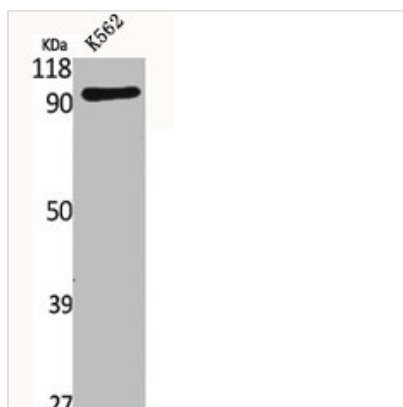
SLC4A11 Antibody

Product Code	CSB-PA001069
Storage	Upon receipt, store at -20°C or -80°C. Avoid repeated freeze.
Uniprot No.	Q8NBS3
Immunogen	Synthesized peptide derived from the Internal region of Human BTR1.
Raised In	Rabbit
Species Reactivity	Human
Tested Applications	WB, ELISA; WB:1:500-1:2000, ELISA:1:20000
Form	Liquid
Conjugate	Non-conjugated
Storage Buffer	Liquid in PBS containing 50% glycerol, 0.5% BSA and 0.02% sodium azide.
Purification Method	The antibody was affinity-purified from rabbit antiserum by affinity-chromatography using epitope-specific immunogen.
Isotype	IgG
Alias	SLC4A11; BTR1; Sodium bicarbonate transporter-like protein 11; Bicarbonate transporter-related protein 1; Sodium borate cotransporter 1; NaBC1; Solute carrier family 4 member 11
Immunogen Species	Homo sapiens (Human)
Target Names	SLC4A11

Image



Western Blot analysis of K562 cells using BTR1 Polyclonal Antibody



Western Blot analysis of K562 cells using BTR1 Polyclonal Antibody