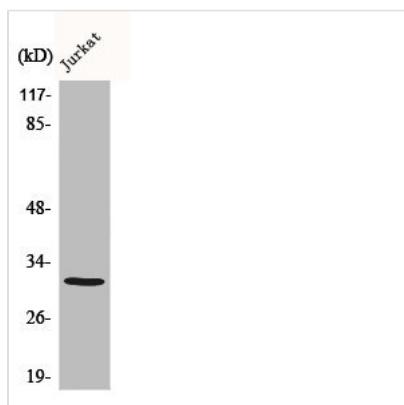




# C1QBP Antibody

<b>Product Code</b>	CSB-PA001089
<b>Storage</b>	Upon receipt, store at -20°C or -80°C. Avoid repeated freeze.
<b>Uniprot No.</b>	Q07021
<b>Immunogen</b>	Synthesized peptide derived from the Internal region of Human C1QBP.
<b>Raised In</b>	Rabbit
<b>Species Reactivity</b>	Human,Mouse,Rat
<b>Tested Applications</b>	WB, IHC, ELISA; WB:1:500-1:2000, IHC:1:100-1:300, ELISA:1:40000
<b>Form</b>	Liquid
<b>Conjugate</b>	Non-conjugated
<b>Storage Buffer</b>	Liquid in PBS containing 50% glycerol, 0.5% BSA and 0.02% sodium azide.
<b>Purification Method</b>	The antibody was affinity-purified from rabbit antiserum by affinity-chromatography using epitope-specific immunogen.
<b>Isotype</b>	IgG
<b>Alias</b>	ASF/SF2 associated protein p32 antibody; C1q globular domain binding protein antibody; C1qBP antibody; C1QBP_HUMAN antibody; Complement component 1 q subcomponent binding protein antibody; Complement component 1 Q subcomponent binding protein mitochondrial antibody; Complement component 1 Q subcomponent-binding protein; mitochondrial antibody; GC1Q R antibody; GC1q R protein antibody; GC1q-R protein antibody; GC1QBP antibody; GC1QR antibody; globular domain of; C1q; receptor for antibody; Glycoprotein gC1qBP antibody; HABP 1 antibody; HABP1 antibody; Hyaluronan binding protein 1 antibody; Hyaluronan-binding protein 1 antibody; Mitochondrial matrix protein p32 antibody; p32 antibody; p32 splicing factor antibody; p33 antibody; Pre mrna splicing factor SF2 P32 subunit precursor antibody; SF2p32 antibody; Splicing factor SF2 associated protein antibody
<b>Immunogen Species</b>	Homo sapiens (Human)
<b>Target Names</b>	C1QBP

## Image



Western Blot analysis of various cells using C1QBP Polyclonal Antibody diluted at 1:1000



---

**Usage**

For Research Use Only. Not for use in diagnostic or therapeutic procedures.