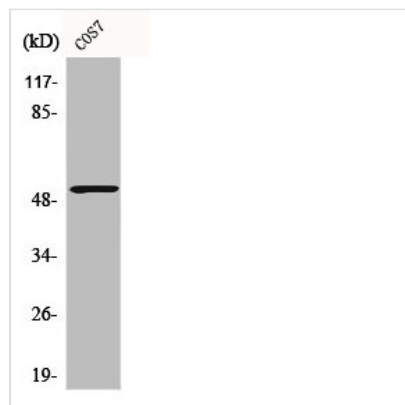




CALR Antibody

Product Code	CSB-PA001196
Storage	Upon receipt, store at -20°C or -80°C. Avoid repeated freeze.
Uniprot No.	P27797
Immunogen	Synthesized peptide derived from the N-terminal region of Human Calregulin.
Raised In	Rabbit
Species Reactivity	Human, Mouse, Rat, Monkey
Tested Applications	WB, IHC, IF, ELISA; WB:1:500-1:2000, IHC:1:100-1:300, IF:1:200-1:1000, ELISA:1:40000
Form	Liquid
Conjugate	Non-conjugated
Storage Buffer	Liquid in PBS containing 50% glycerol, 0.5% BSA and 0.02% sodium azide.
Purification Method	The antibody was affinity-purified from rabbit antiserum by affinity-chromatography using epitope-specific immunogen.
Isotype	IgG
Alias	CALR; CRTC; Calreticulin; CRP55; Calregulin; Endoplasmic reticulum resident protein 60; ERp60; HACBP; grp60
Immunogen Species	Homo sapiens (Human)
Target Names	CALR

Image



Western Blot analysis of COS7 cells using Calregulin Polyclonal Antibody

Usage For Research Use Only. Not for use in diagnostic or therapeutic procedures.