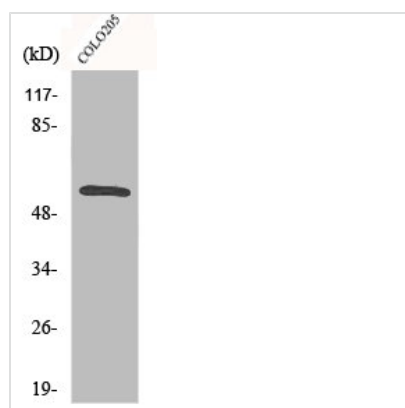




CAMK2G/CAMK2B Antibody

Product Code	CSB-PA001197
Storage	Upon receipt, store at -20°C or -80°C. Avoid repeated freeze.
Uniprot No.	Q13555/Q13554
Immunogen	Synthesized peptide derived from the C-terminal region of Human CaMKIIβ/γ.
Raised In	Rabbit
Species Reactivity	Human,Mouse,Rat
Tested Applications	WB, IF, ELISA; WB:1:500-1:2000, IF:1:200-1:1000, ELISA:1:20000
Form	Liquid
Conjugate	Non-conjugated
Storage Buffer	Liquid in PBS containing 50% glycerol, 0.5% BSA and 0.02% sodium azide.
Purification Method	The antibody was affinity-purified from rabbit antiserum by affinity-chromatography using epitope-specific immunogen.
Isotype	IgG
Alias	CAMK2G; CAMK; CAMK-II; CAMKG; Calcium/calmodulin-dependent protein kinase type II subunit gamma; CaM kinase II subunit gamma; CaMK-II subunit gamma; CAMK2B; CAM2; CAMK2; CAMKB; Calcium/calmodulin-dependent protein kinase type II subunit bet
Immunogen Species	Homo sapiens (Human)
Target Names	CAMK2G/CAMK2B

Image



Western Blot analysis of Jurkat cells using CaMKIIβ/γ Polyclonal Antibody

Usage

For Research Use Only. Not for use in diagnostic or therapeutic procedures.