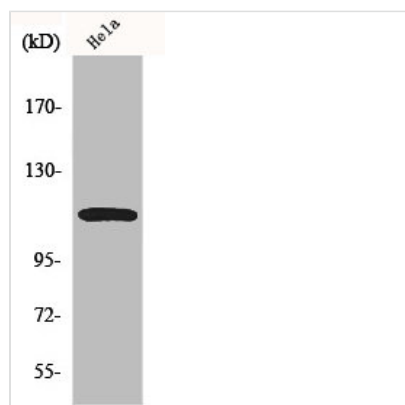




CARD10 Antibody

Product Code	CSB-PA001213
Storage	Upon receipt, store at -20°C or -80°C. Avoid repeated freeze.
Uniprot No.	Q9BWT7
Immunogen	Synthesized peptide derived from the Internal region of Human CARD 10.
Raised In	Rabbit
Species Reactivity	Human,Mouse
Tested Applications	WB, IHC, IF, ELISA; WB:1:500-1:2000, IHC:1:100-1:300, IF:1:200-1:1000, ELISA:1:10000
Form	Liquid
Conjugate	Non-conjugated
Storage Buffer	Liquid in PBS containing 50% glycerol, 0.5% BSA and 0.02% sodium azide.
Purification Method	The antibody was affinity-purified from rabbit antiserum by affinity-chromatography using epitope-specific immunogen.
Isotype	IgG
Alias	CARD10; CARMA3; Caspase recruitment domain-containing protein 10; CARD-containing MAGUK protein 3; Carma 3
Immunogen Species	Homo sapiens (Human)
Target Names	CARD10

Image



Western Blot analysis of 293 cells using CARD 10 Polyclonal Antibody