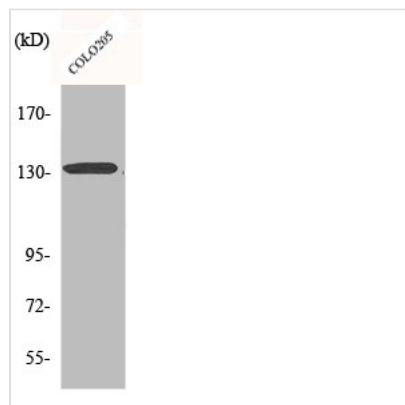




CARD11 Antibody

Product Code	CSB-PA001214
Storage	Upon receipt, store at -20°C or -80°C. Avoid repeated freeze.
Uniprot No.	Q9BXL7
Immunogen	Synthesized peptide derived from the N-terminal region of Human CARD 11.
Raised In	Rabbit
Species Reactivity	Human,Mouse
Tested Applications	WB, IHC, IF, ELISA; WB:1:500-1:2000, IHC:1:100-1:300, IF:1:200-1:1000, ELISA:1:40000
Form	Liquid
Conjugate	Non-conjugated
Storage Buffer	Liquid in PBS containing 50% glycerol, 0.5% BSA and 0.02% sodium azide.
Purification Method	The antibody was affinity-purified from rabbit antiserum by affinity-chromatography using epitope-specific immunogen.
Isotype	IgG
Alias	CARD11; CARMA1; Caspase recruitment domain-containing protein 11; CARD-containing MAGUK protein 1; Carma 1
Immunogen Species	Homo sapiens (Human)
Target Names	CARD11

Image



Western Blot analysis of COLO205 cells using CARD 11 Polyclonal Antibody