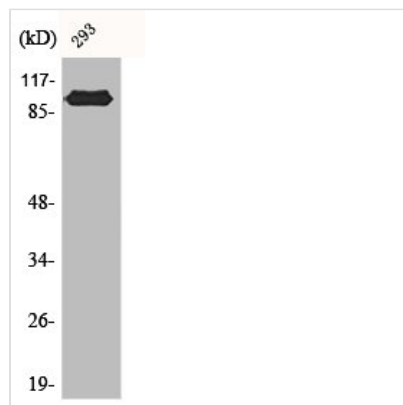




CSE1L Antibody

Product Code	CSB-PA001218
Storage	Upon receipt, store at -20°C or -80°C. Avoid repeated freeze.
Uniprot No.	P55060
Immunogen	Synthesized peptide derived from the N-terminal region of Human CAS.
Raised In	Rabbit
Species Reactivity	Human
Tested Applications	WB, IHC, IP, IF, ELISA; WB:1:500-1:2000, IHC:1:100-1:300, IP:2-5ug, IF:1:200-1:1000, ELISA:1:40000
Form	Liquid
Conjugate	Non-conjugated
Storage Buffer	Liquid in PBS containing 50% glycerol, 0.5% BSA and 0.02% sodium azide.
Purification Method	The antibody was affinity-purified from rabbit antiserum by affinity-chromatography using epitope-specific immunogen.
Isotype	IgG
Alias	CSE1L; CAS; XPO2; Exportin-2; Exp2; Cellular apoptosis susceptibility protein; Chromosome segregation 1-like protein; Importin-alpha re-exporter
Immunogen Species	Homo sapiens (Human)
Target Names	CSE1L

Image



Western Blot analysis of 293 cells using CAS Polyclonal Antibody

Usage

For Research Use Only. Not for use in diagnostic or therapeutic procedures.