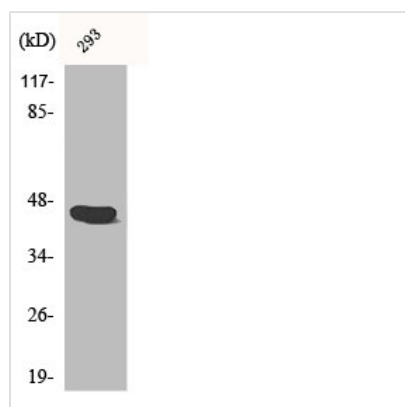




CASP1 Antibody

Product Code	CSB-PA001227
Storage	Upon receipt, store at -20°C or -80°C. Avoid repeated freeze.
Uniprot No.	P29466
Immunogen	Synthesized peptide derived from Human Caspase-1 around the non-phosphorylation site of S376.
Raised In	Rabbit
Species Reactivity	Human, Mouse, Rat
Tested Applications	WB, IHC, ELISA; WB:1:500-1:2000, IHC:1:100-1:300, ELISA:1:20000
Form	Liquid
Conjugate	Non-conjugated
Storage Buffer	Liquid in PBS containing 50% glycerol, 0.5% BSA and 0.02% sodium azide.
Purification Method	The antibody was affinity-purified from rabbit antiserum by affinity-chromatography using epitope-specific immunogen.
Isotype	IgG
Alias	CASP1; IL1BC; IL1BCE; Caspase-1; CASP-1; Interleukin-1 beta convertase; IL-1BC; Interleukin-1 beta-converting enzyme; ICE; IL-1 beta-converting enzyme; p45
Immunogen Species	Homo sapiens (Human)
Target Names	CASP1

Image



Western Blot analysis of 293 cells using Caspase-1 Polyclonal Antibody

Usage For Research Use Only. Not for use in diagnostic or therapeutic procedures.