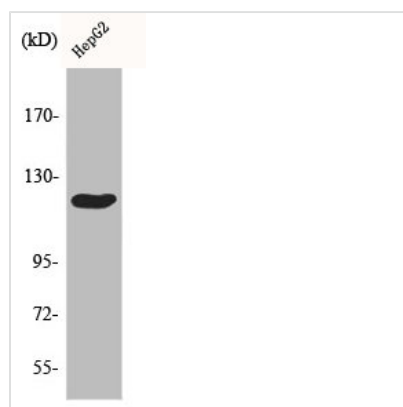




CBL Antibody

Product Code	CSB-PA001352
Storage	Upon receipt, store at -20°C or -80°C. Avoid repeated freeze.
Uniprot No.	P22681
Immunogen	Synthesized peptide derived from Human Cbl around the non-phosphorylation site of Y674.
Raised In	Rabbit
Species Reactivity	Human,Mouse,Rat
Tested Applications	WB, IHC, ELISA; WB:1:500-1:2000, IHC:1:100-1:300, ELISA:1:5000
Form	Liquid
Conjugate	Non-conjugated
Storage Buffer	Liquid in PBS containing 50% glycerol, 0.5% BSA and 0.02% sodium azide.
Purification Method	The antibody was affinity-purified from rabbit antiserum by affinity-chromatography using epitope-specific immunogen.
Isotype	IgG
Alias	CBL; CBL2; RNF55; E3 ubiquitin-protein ligase CBL; Casitas B-lineage lymphoma proto-oncogene; Proto-oncogene c-Cbl; RING finger protein 55; Signal transduction protein CBL
Immunogen Species	Homo sapiens (Human)
Target Names	CBL

Image



Western Blot analysis of HepG2 cells using Cbl Polyclonal Antibody

Usage For Research Use Only. Not for use in diagnostic or therapeutic procedures.