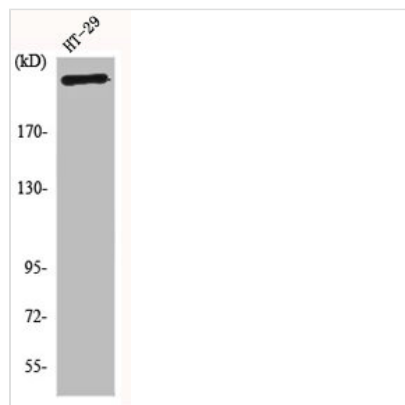




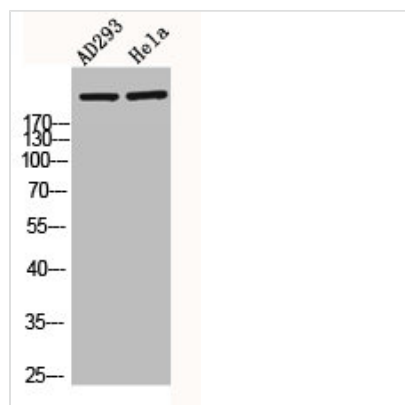
CREBBP Antibody

Product Code	CSB-PA001358
Storage	Upon receipt, store at -20°C or -80°C. Avoid repeated freeze.
Uniprot No.	Q92793
Immunogen	Synthesized peptide derived from Human CBP around the non-acetylation site of K1535.
Raised In	Rabbit
Species Reactivity	Human,Mouse,Rat
Tested Applications	WB, IHC, IF, ELISA; WB:1:500-1:2000, IHC:1:100-1:300, IF:1:200-1:1000, ELISA:1:20000
Form	Liquid
Conjugate	Non-conjugated
Storage Buffer	Liquid in PBS containing 50% glycerol, 0.5% BSA and 0.02% sodium azide.
Purification Method	The antibody was affinity-purified from rabbit antiserum by affinity-chromatography using epitope-specific immunogen.
Isotype	IgG
Alias	CREBBP; CBP; CREB-binding protein
Immunogen Species	Homo sapiens (Human)
Target Names	CREBBP

Image



Western Blot analysis of HT29 cells using CBP Polyclonal Antibody



Western Blot analysis of AD293 HELA cells
using CBP Polyclonal Antibody