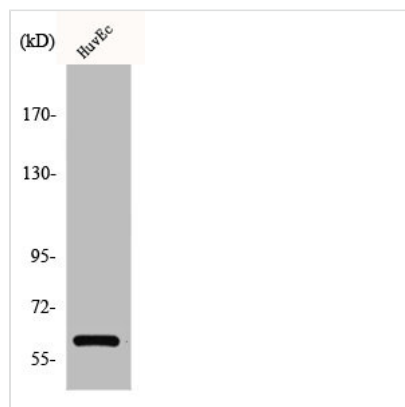




CCDC102B Antibody

Product Code	CSB-PA001382
Storage	Upon receipt, store at -20°C or -80°C. Avoid repeated freeze.
Uniprot No.	Q68D86
Immunogen	Synthesized peptide derived from the Internal region of Human CCDC102B.
Raised In	Rabbit
Species Reactivity	Human
Tested Applications	WB, IHC, ELISA; WB:1:500-1:2000, IHC:1:100-1:300, ELISA:1:40000
Form	Liquid
Conjugate	Non-conjugated
Storage Buffer	Liquid in PBS containing 50% glycerol, 0.5% BSA and 0.02% sodium azide.
Purification Method	The antibody was affinity-purified from rabbit antiserum by affinity-chromatography using epitope-specific immunogen.
Isotype	IgG
Alias	CCDC102B; C18orf14; Coiled-coil domain-containing protein 102B
Immunogen Species	Homo sapiens (Human)
Target Names	CCDC102B

Image



Western Blot analysis of COLO205 cells using CCDC102B Polyclonal Antibody

Usage

For Research Use Only. Not for use in diagnostic or therapeutic procedures.