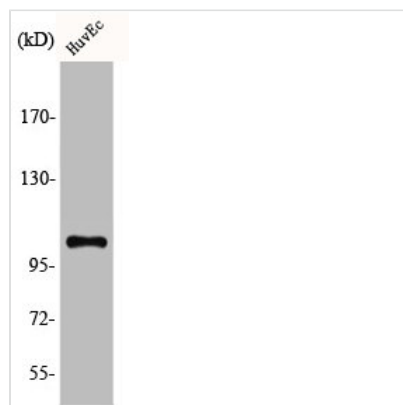




AGBL2 Antibody

Product Code	CSB-PA001406
Storage	Upon receipt, store at -20°C or -80°C. Avoid repeated freeze.
Uniprot No.	Q5U5Z8
Immunogen	Synthesized peptide derived from the C-terminal region of Human CCP2.
Raised In	Rabbit
Species Reactivity	Human, Mouse
Tested Applications	WB, IHC, ELISA; WB:1:500-1:2000, IHC:1:100-1:300, ELISA:1:40000
Form	Liquid
Conjugate	Non-conjugated
Storage Buffer	Liquid in PBS containing 50% glycerol, 0.5% BSA and 0.02% sodium azide.
Purification Method	The antibody was affinity-purified from rabbit antiserum by affinity-chromatography using epitope-specific immunogen.
Isotype	IgG
Alias	AGBL2; CCP2; Cytosolic carboxypeptidase 2; ATP/GTP-binding protein-like 2
Immunogen Species	Homo sapiens (Human)
Target Names	AGBL2

Image



Western Blot analysis of HuvEc cells using CCP2 Polyclonal Antibody

Usage

For Research Use Only. Not for use in diagnostic or therapeutic procedures.