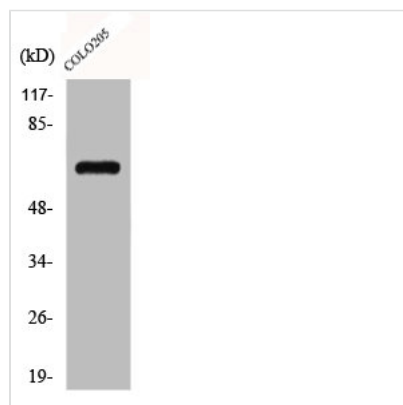




SEMA7A Antibody

Product Code	CSB-PA001418
Storage	Upon receipt, store at -20°C or -80°C. Avoid repeated freeze.
Uniprot No.	O75326
Immunogen	Synthesized peptide derived from the Internal region of Human CD108.
Raised In	Rabbit
Species Reactivity	Human,Mouse,Rat
Tested Applications	WB, ELISA; WB:1:500-1:2000, ELISA:1:5000
Form	Liquid
Conjugate	Non-conjugated
Storage Buffer	Liquid in PBS containing 50% glycerol, 0.5% BSA and 0.02% sodium azide.
Purification Method	The antibody was affinity-purified from rabbit antiserum by affinity-chromatography using epitope-specific immunogen.
Isotype	IgG
Alias	SEMA7A; CD108; SEMAL; Semaphorin-7A; CDw108; JMH blood group antigen; John-Milton-Hargen human blood group Ag; Semaphorin-K1; Sema K1; Semaphorin-L; Sema L; CD antigen CD108
Immunogen Species	Homo sapiens (Human)
Target Names	SEMA7A

Image



Western Blot analysis of Jurkat cells using CD108 Polyclonal Antibody