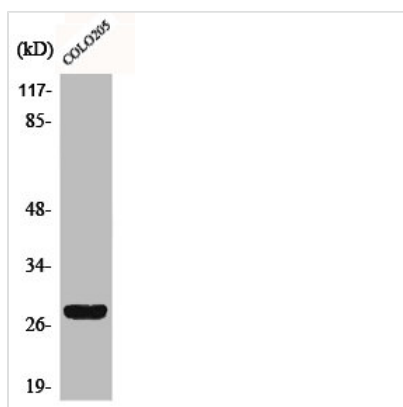




CD160 Antibody

Product Code	CSB-PA001426
Storage	Upon receipt, store at -20°C or -80°C. Avoid repeated freeze.
Uniprot No.	O95971
Immunogen	Synthesized peptide derived from the Internal region of Human CD160.
Raised In	Rabbit
Species Reactivity	Human
Tested Applications	WB, IF, ELISA; WB:1:500-1:2000, IF:1:200-1:1000, ELISA:1:20000
Form	Liquid
Conjugate	Non-conjugated
Storage Buffer	Liquid in PBS containing 50% glycerol, 0.5% BSA and 0.02% sodium azide.
Purification Method	The antibody was affinity-purified from rabbit antiserum by affinity-chromatography using epitope-specific immunogen.
Isotype	IgG
Alias	CD160; BY55; CD160 antigen; Natural killer cell receptor BY55; CD antigen CD160
Immunogen Species	Homo sapiens (Human)
Target Names	CD160

Image



Western Blot analysis of COLO205 cells using CD160 Polyclonal Antibody

Usage

For Research Use Only. Not for use in diagnostic or therapeutic procedures.