

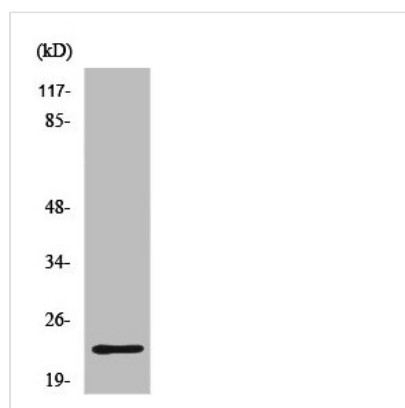


IGLL1/IGLC1/IGLC2/IGLC3/IGLC6/IGLC7

Antibody

Product Code	CSB-PA001429
Storage	Upon receipt, store at -20°C or -80°C. Avoid repeated freeze.
Uniprot No.	P15814/P0CG04/P0CG05/P0CG06/P0CF74/A0M8Q6
Immunogen	Synthesized peptide derived from the N-terminal region of Human CD179b.
Raised In	Rabbit
Species Reactivity	Human
Tested Applications	WB, ELISA; WB:1:500-1:2000, ELISA:1:10000
Form	Liquid
Conjugate	Non-conjugated
Storage Buffer	Liquid in PBS containing 50% glycerol, 0.5% BSA and 0.02% sodium azide.
Purification Method	The antibody was affinity-purified from rabbit antiserum by affinity-chromatography using epitope-specific immunogen.
Isotype	IgG
Alias	IGLL1; IGL1; Immunoglobulin lambda-like polypeptide 1; CD179 antigen-like family member B; Ig lambda-5; Immunoglobulin omega polypeptide; Immunoglobulin-related protein 14.1; CD antigen CD179b; IGLC1; Ig lambda-1 chain C regions; IGLC2; Ig
Immunogen Species	Homo sapiens (Human)
Target Names	IGLL1/IGLC1/IGLC6/IGLC7

Image



Western Blot analysis of K562 cells using CD179b Polyclonal Antibody