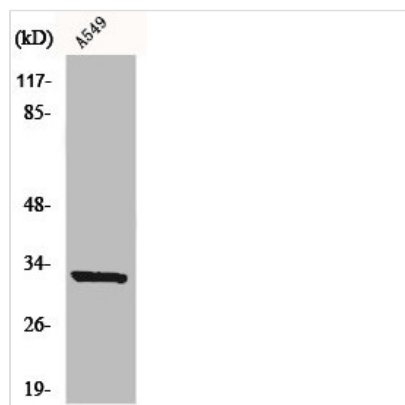




MS4A1 Antibody

Product Code	CSB-PA001433
Storage	Upon receipt, store at -20°C or -80°C. Avoid repeated freeze.
Uniprot No.	P11836
Immunogen	Synthesized peptide derived from the C-terminal region of Human CD20.
Raised In	Rabbit
Species Reactivity	Human
Tested Applications	WB, ELISA; WB:1:500-1:2000, ELISA:1:40000
Form	Liquid
Conjugate	Non-conjugated
Storage Buffer	Liquid in PBS containing 50% glycerol, 0.5% BSA and 0.02% sodium azide.
Purification Method	The antibody was affinity-purified from rabbit antiserum by affinity-chromatography using epitope-specific immunogen.
Isotype	IgG
Alias	MS4A1; CD20; B-lymphocyte antigen CD20; B-lymphocyte surface antigen B1; Bp35; Leukocyte surface antigen Leu-16; Membrane-spanning 4-domains subfamily A member 1; CD antigen CD20
Immunogen Species	Homo sapiens (Human)
Target Names	MS4A1

Image



Western Blot analysis of A549 cells using CD20 Polyclonal Antibody

Usage

For Research Use Only. Not for use in diagnostic or therapeutic procedures.