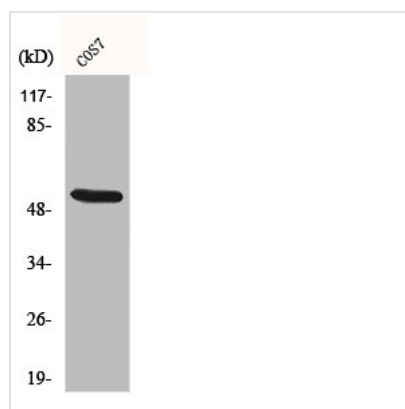




CD2BP2 Antibody

Product Code	CSB-PA001438
Storage	Upon receipt, store at -20°C or -80°C. Avoid repeated freeze.
Uniprot No.	O95400
Immunogen	Synthesized peptide derived from the Internal region of Human CD2BP2.
Raised In	Rabbit
Species Reactivity	Human,Monkey
Tested Applications	WB, IHC, ELISA; WB:1:500-1:2000, IHC:1:100-1:300, ELISA:1:40000
Form	Liquid
Conjugate	Non-conjugated
Storage Buffer	Liquid in PBS containing 50% glycerol, 0.5% BSA and 0.02% sodium azide.
Purification Method	The antibody was affinity-purified from rabbit antiserum by affinity-chromatography using epitope-specific immunogen.
Isotype	IgG
Alias	CD2BP2; KIAA1178; CD2 antigen cytoplasmic tail-binding protein 2; CD2 cytoplasmic domain-binding protein 2; CD2 tail-binding protein 2
Immunogen Species	Homo sapiens (Human)
Target Names	CD2BP2

Image



Western Blot analysis of COS7 cells using CD2BP2 Polyclonal Antibody

Usage

For Research Use Only. Not for use in diagnostic or therapeutic procedures.