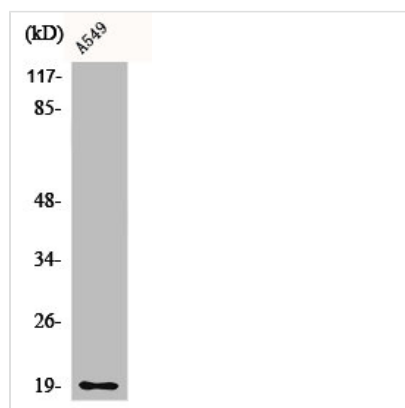




CD3D Antibody

| | |
|----------------------------|---|
| Product Code | CSB-PA001452 |
| Storage | Upon receipt, store at -20°C or -80°C. Avoid repeated freeze. |
| Uniprot No. | P04234 |
| Immunogen | Synthesized peptide derived from the Internal region of Human CD3-δ. |
| Raised In | Rabbit |
| Species Reactivity | Human |
| Tested Applications | WB, ELISA; WB:1:500-1:2000, IHC:1:200-1:1000, ELISA:1:5000 |
| Form | Liquid |
| Conjugate | Non-conjugated |
| Storage Buffer | Liquid in PBS containing 50% glycerol, 0.5% BSA and 0.02% sodium azide. |
| Purification Method | The antibody was affinity-purified from rabbit antiserum by affinity-chromatography using epitope-specific immunogen. |
| Isotype | IgG |
| Alias | CD3D; T3D; T-cell surface glycoprotein CD3 delta chain; T-cell receptor T3 delta chain; CD antigen CD3d |
| Immunogen Species | Homo sapiens (Human) |
| Target Names | CD3D |

Image



Western Blot analysis of A549 cells using CD3-δ Polyclonal Antibody