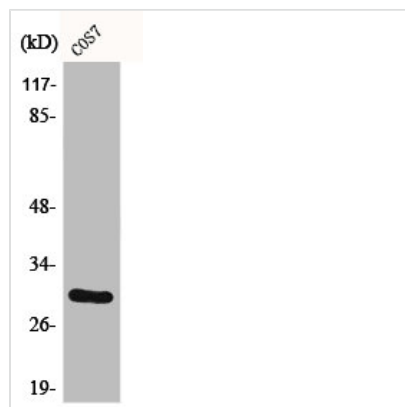




CD40 Antibody

Product Code	CSB-PA001455
Storage	Upon receipt, store at -20°C or -80°C. Avoid repeated freeze.
Uniprot No.	P25942
Immunogen	Synthesized peptide derived from the C-terminal region of Human CD40.
Raised In	Rabbit
Species Reactivity	Human,Mouse,Monkey
Tested Applications	WB, IHC, ELISA; WB:1:500-1:2000, IHC:1:100-1:300, ELISA:1:10000
Form	Liquid
Conjugate	Non-conjugated
Storage Buffer	Liquid in PBS containing 50% glycerol, 0.5% BSA and 0.02% sodium azide.
Purification Method	The antibody was affinity-purified from rabbit antiserum by affinity-chromatography using epitope-specific immunogen.
Isotype	IgG
Alias	CD40; TNFRSF5; Tumor necrosis factor receptor superfamily member 5; B-cell surface antigen CD40; Bp50; CD40L receptor; CDw40; CD antigen CD40
Immunogen Species	Homo sapiens (Human)
Target Names	CD40

Image



Western Blot analysis of COS7 cells using CD40 Polyclonal Antibody