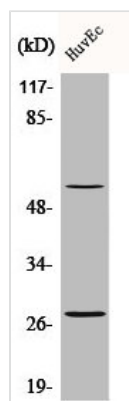




CD69 Antibody

Product Code	CSB-PA001473
Storage	Upon receipt, store at -20°C or -80°C. Avoid repeated freeze.
Uniprot No.	Q07108
Immunogen	Synthesized peptide derived from the Internal region of Human CD69.
Raised In	Rabbit
Species Reactivity	Human,Mouse,Rat
Tested Applications	WB, ELISA; WB:1:500-1:2000, ELISA:1:40000
Form	Liquid
Conjugate	Non-conjugated
Storage Buffer	Liquid in PBS containing 50% glycerol, 0.5% BSA and 0.02% sodium azide.
Purification Method	The antibody was affinity-purified from rabbit antiserum by affinity-chromatography using epitope-specific immunogen.
Isotype	IgG
Alias	CD69; CLEC2C; Early activation antigen CD69; Activation inducer molecule; AIM; BL-AC/P26; C-type lectin domain family 2 member C; EA1; Early T-cell activation antigen p60; GP32/28; Leukocyte surface antigen Leu-23; MLR-3; CD antigen CD69
Immunogen Species	Homo sapiens (Human)
Target Names	CD69

Image



Western Blot analysis of HuvEc cells using CD69 Polyclonal Antibody