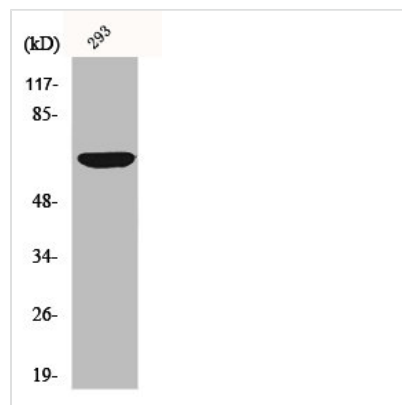




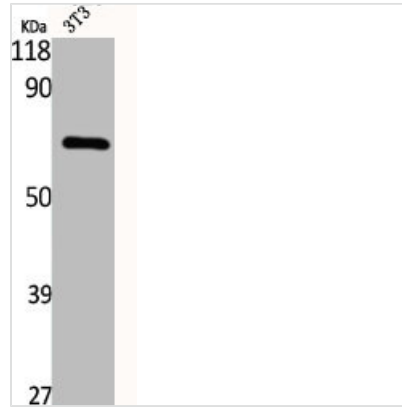
CDC23 Antibody

Product Code	CSB-PA001498
Storage	Upon receipt, store at -20°C or -80°C. Avoid repeated freeze.
Uniprot No.	Q9UJX2
Immunogen	Synthesized peptide derived from the Internal region of Human Cdc23.
Raised In	Rabbit
Species Reactivity	Human, Mouse, Monkey
Tested Applications	WB, ELISA; WB:1:500-1:2000, ELISA:1:20000
Form	Liquid
Conjugate	Non-conjugated
Storage Buffer	Liquid in PBS containing 50% glycerol, 0.5% BSA and 0.02% sodium azide.
Purification Method	The antibody was affinity-purified from rabbit antiserum by affinity-chromatography using epitope-specific immunogen.
Isotype	IgG
Alias	CDC23; ANAPC8; Cell division cycle protein 23 homolog; Anaphase-promoting complex subunit 8; APC8; Cyclosome subunit 8
Immunogen Species	Homo sapiens (Human)
Target Names	CDC23

Image



Western Blot analysis of COS7 cells using Cdc23 Polyclonal Antibody



Western Blot analysis of NIH-3T3 cells using Cdc23 Polyclonal Antibody

Usage

For Research Use Only. Not for use in diagnostic or therapeutic procedures.