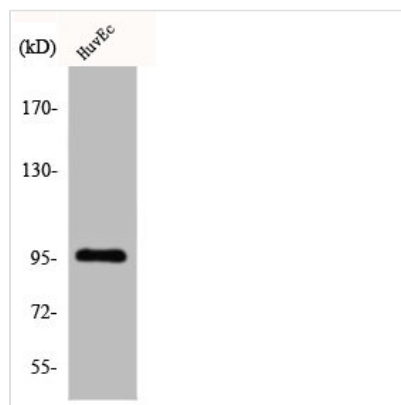




CDC27 Antibody

Product Code	CSB-PA001504
Storage	Upon receipt, store at -20°C or -80°C. Avoid repeated freeze.
Uniprot No.	P30260
Immunogen	Synthesized peptide derived from the Internal region of Human Cdc27.
Raised In	Rabbit
Species Reactivity	Human, Mouse, Rat
Tested Applications	WB, IHC, ELISA; WB:1:500-1:2000, IHC:1:100-1:300, ELISA:1:5000
Form	Liquid
Conjugate	Non-conjugated
Storage Buffer	Liquid in PBS containing 50% glycerol, 0.5% BSA and 0.02% sodium azide.
Purification Method	The antibody was affinity-purified from rabbit antiserum by affinity-chromatography using epitope-specific immunogen.
Isotype	IgG
Alias	CDC27; ANAPC3; D0S1430E; D17S978E; Cell division cycle protein 27 homolog; Anaphase-promoting complex subunit 3; APC3; CDC27 homolog; CDC27Hs; H-NUC
Immunogen Species	Homo sapiens (Human)
Target Names	CDC27

Image



Western Blot analysis of COLO205 cells using Cdc27 Polyclonal Antibody

Usage For Research Use Only. Not for use in diagnostic or therapeutic procedures.