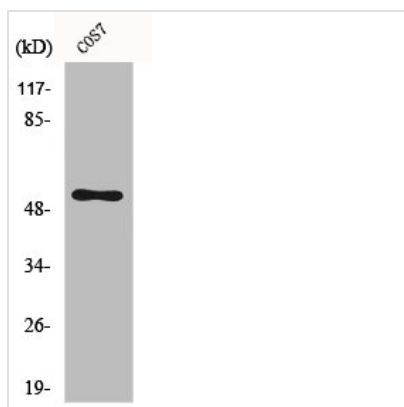




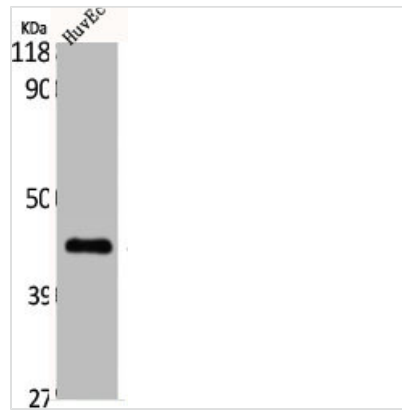
CDC37 Antibody

Product Code	CSB-PA001510
Storage	Upon receipt, store at -20°C or -80°C. Avoid repeated freeze.
Uniprot No.	Q16543
Immunogen	Synthesized peptide derived from Human Cdc37 around the non-phosphorylation site of S13.
Raised In	Rabbit
Species Reactivity	Human,Mouse,Rat,Monkey
Tested Applications	WB, IHC, IF, ELISA; WB:1:500-1:2000, IHC:1:100-1:300, IF:1:200-1:1000, ELISA:1:20000
Form	Liquid
Conjugate	Non-conjugated
Storage Buffer	Liquid in PBS containing 50% glycerol, 0.5% BSA and 0.02% sodium azide.
Purification Method	The antibody was affinity-purified from rabbit antiserum by affinity-chromatography using epitope-specific immunogen.
Isotype	IgG
Alias	CDC37; CDC37A; Hsp90 co-chaperone Cdc37; Hsp90 chaperone protein kinase-targeting subunit; p50Cdc37
Immunogen Species	Homo sapiens (Human)
Target Names	CDC37

Image



Western Blot analysis of MCF7 cells using Cdc37 Polyclonal Antibody



Western Blot analysis of HuvEc cells using Cdc37 Polyclonal Antibody

Usage

For Research Use Only. Not for use in diagnostic or therapeutic procedures.