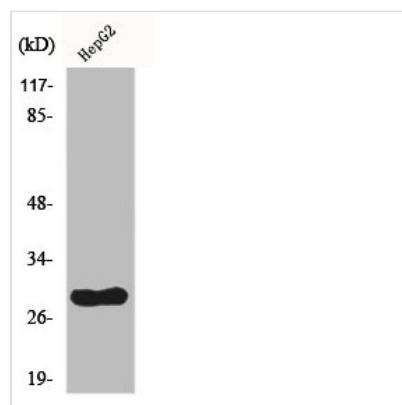




CDCA3 Antibody

Product Code	CSB-PA001515
Storage	Upon receipt, store at -20°C or -80°C. Avoid repeated freeze.
Uniprot No.	Q99618
Immunogen	Synthesized peptide derived from the C-terminal region of Human CdcA3.
Raised In	Rabbit
Species Reactivity	Human,Mouse,Rat
Tested Applications	WB, IHC, IF, ELISA; WB:1:500-1:2000, IHC:1:100-1:300, IF:1:200-1:1000, ELISA:1:5000
Form	Liquid
Conjugate	Non-conjugated
Storage Buffer	Liquid in PBS containing 50% glycerol, 0.5% BSA and 0.02% sodium azide.
Purification Method	The antibody was affinity-purified from rabbit antiserum by affinity-chromatography using epitope-specific immunogen.
Isotype	IgG
Alias	CDCA3; C8; GRCC8; TOME1; Cell division cycle-associated protein 3; Gene-rich cluster protein C8; Trigger of mitotic entry protein 1; TOME-1
Immunogen Species	Homo sapiens (Human)
Target Names	CDCA3

Image



Western Blot analysis of HepG2 cells using CdcA3 Polyclonal Antibody

Usage For Research Use Only. Not for use in diagnostic or therapeutic procedures.