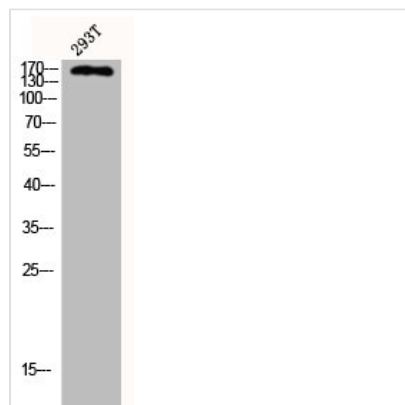




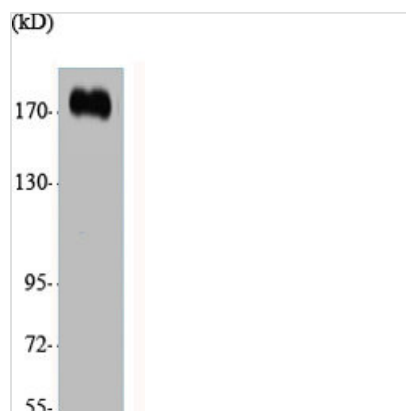
CUX1/CUX1 Antibody

Product Code	CSB-PA001549
Storage	Upon receipt, store at -20°C or -80°C. Avoid repeated freeze.
Uniprot No.	P39880/Q13948
Immunogen	Synthesized peptide derived from the N-terminal region of Human CUX1.
Raised In	Rabbit
Species Reactivity	Human, Mouse
Tested Applications	WB, IHC, IF, ELISA; WB:1:500-1:2000, IHC:1:100-1:300, IF:1:200-1:1000, ELISA:1:40000
Form	Liquid
Conjugate	Non-conjugated
Storage Buffer	Liquid in PBS containing 50% glycerol, 0.5% BSA and 0.02% sodium azide.
Purification Method	The antibody was affinity-purified from rabbit antiserum by affinity-chromatography using epitope-specific immunogen.
Isotype	IgG
Alias	CUX1; CUTL1; Homeobox protein cut-like 1; CCAAT displacement protein; CDP; Homeobox protein cux-1; CUX1; CUTL1; Protein CASP
Immunogen Species	Homo sapiens (Human)
Target Names	CUX1/CUX1

Image



Western Blot analysis of 293T cells using CUX1 Polyclonal Antibody



Western Blot analysis of various cells using
CUX1 Polyclonal Antibody