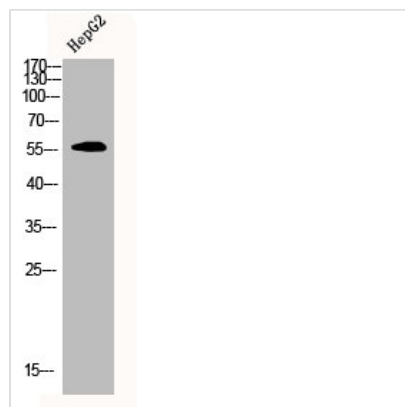




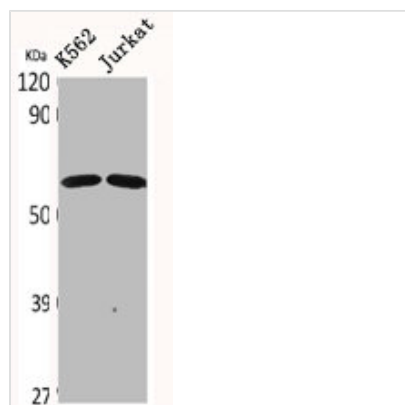
CDYL2 Antibody

Product Code	CSB-PA001552
Storage	Upon receipt, store at -20°C or -80°C. Avoid repeated freeze.
Uniprot No.	Q8N8U2
Immunogen	Synthesized peptide derived from the N-terminal region of Human CDYL2.
Raised In	Rabbit
Species Reactivity	Human
Tested Applications	WB, IHC, ICC, ELISA; WB:1:500-1:2000, IHC:1:100-1:300, IHC:1:200-1:1000, ELISA:1:20000
Form	Liquid
Conjugate	Non-conjugated
Storage Buffer	Liquid in PBS containing 50% glycerol, 0.5% BSA and 0.02% sodium azide.
Purification Method	The antibody was affinity-purified from rabbit antiserum by affinity-chromatography using epitope-specific immunogen.
Isotype	IgG
Alias	CDYL2; Chromodomain Y-like protein 2; CDY-like 2
Immunogen Species	Homo sapiens (Human)
Target Names	CDYL2

Image



Western Blot analysis of HEPG2 cells using CDYL2 Polyclonal Antibody



Western Blot analysis of K562 Jurkat cells using CDYL2 Polyclonal Antibody