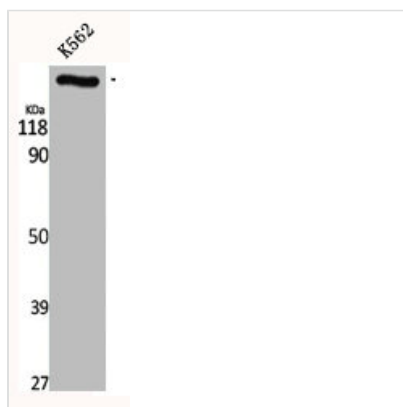




CEP290 Antibody

Product Code	CSB-PA001580
Storage	Upon receipt, store at -20°C or -80°C. Avoid repeated freeze.
Uniprot No.	O15078
Immunogen	Synthesized peptide derived from the Internal region of Human CEP290.
Raised In	Rabbit
Species Reactivity	Human, Mouse
Tested Applications	WB, ELISA; WB:1:500-1:2000, ELISA:1:20000
Form	Liquid
Conjugate	Non-conjugated
Storage Buffer	Liquid in PBS containing 50% glycerol, 0.5% BSA and 0.02% sodium azide.
Purification Method	The antibody was affinity-purified from rabbit antiserum by affinity-chromatography using epitope-specific immunogen.
Isotype	IgG
Alias	CEP290; BBS14; KIAA0373; NPHP6; Centrosomal protein of 290 kDa; Cep290; Bardet-Biedl syndrome 14 protein; Cancer/testis antigen 87; CT87; Nephrocystin-6; Tumor antigen se2-2
Immunogen Species	Homo sapiens (Human)
Target Names	CEP290

Image



Western Blot analysis of K562 cells using CEP290 Polyclonal Antibody

Usage For Research Use Only. Not for use in diagnostic or therapeutic procedures.