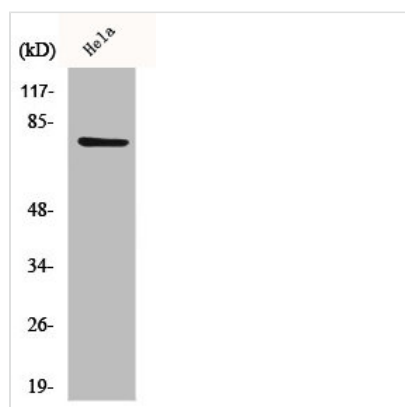




CEP78 Antibody

Product Code	CSB-PA001588
Storage	Upon receipt, store at -20°C or -80°C. Avoid repeated freeze.
Uniprot No.	Q5JTW2
Immunogen	Synthesized peptide derived from the Internal region of Human CEP78.
Raised In	Rabbit
Species Reactivity	Human, Mouse
Tested Applications	WB, IHC, ELISA; WB:1:500-1:2000, IHC:1:100-1:300, ELISA:1:20000
Form	Liquid
Conjugate	Non-conjugated
Storage Buffer	Liquid in PBS containing 50% glycerol, 0.5% BSA and 0.02% sodium azide.
Purification Method	The antibody was affinity-purified from rabbit antiserum by affinity-chromatography using epitope-specific immunogen.
Isotype	IgG
Alias	CEP78; C9orf81; Centrosomal protein of 78 kDa; Cep78
Immunogen Species	Homo sapiens (Human)
Target Names	CEP78

Image



Western Blot analysis of HeLa cells using CEP78 Polyclonal Antibody

Usage

For Research Use Only. Not for use in diagnostic or therapeutic procedures.