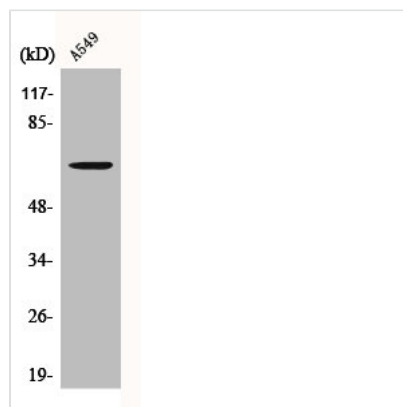




CERKL Antibody

Product Code	CSB-PA001592
Storage	Upon receipt, store at -20°C or -80°C. Avoid repeated freeze.
Uniprot No.	Q49MI3
Immunogen	Synthesized peptide derived from the Internal region of Human CERKL.
Raised In	Rabbit
Species Reactivity	Human
Tested Applications	WB, IHC, ELISA; WB:1:500-1:2000, IHC:1:100-1:300, ELISA:1:20000
Form	Liquid
Conjugate	Non-conjugated
Storage Buffer	Liquid in PBS containing 50% glycerol, 0.5% BSA and 0.02% sodium azide.
Purification Method	The antibody was affinity-purified from rabbit antiserum by affinity-chromatography using epitope-specific immunogen.
Isotype	IgG
Alias	CERKL; Ceramide kinase-like protein
Immunogen Species	Homo sapiens (Human)
Target Names	CERKL

Image



Western Blot analysis of A549 cells using CERKL Polyclonal Antibody

Usage

For Research Use Only. Not for use in diagnostic or therapeutic procedures.