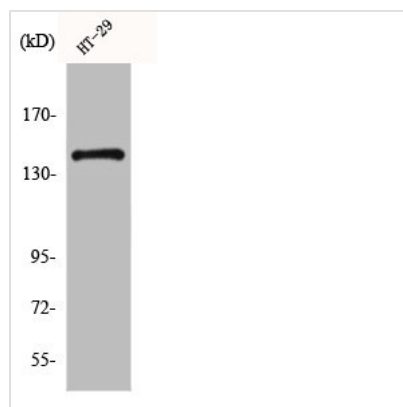




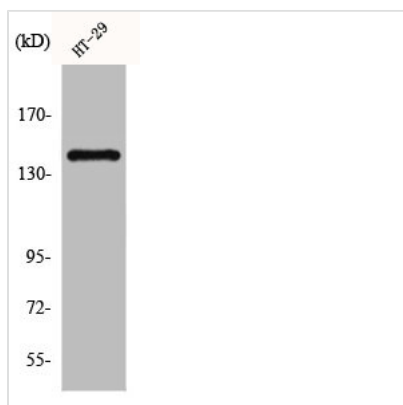
CSF1R Antibody

Product Code	CSB-PA001597
Storage	Upon receipt, store at -20°C or -80°C. Avoid repeated freeze.
Uniprot No.	P07333
Immunogen	Synthesized peptide derived from Human c-Fms around the non-phosphorylation site of Y809.
Raised In	Rabbit
Species Reactivity	Human
Tested Applications	WB, IHC, IF, ELISA; WB:1:500-1:2000, IHC:1:100-1:300, IF:1:200-1:1000, ELISA:1:40000
Form	Liquid
Conjugate	Non-conjugated
Storage Buffer	Liquid in PBS containing 50% glycerol, 0.5% BSA and 0.02% sodium azide.
Purification Method	The antibody was affinity-purified from rabbit antiserum by affinity-chromatography using epitope-specific immunogen.
Isotype	IgG
Alias	CSF1R; FMS; Macrophage colony-stimulating factor 1 receptor; CSF-1 receptor; CSF-1-R; CSF-1R; M-CSF-R; Proto-oncogene c-Fms; CD antigen CD115
Immunogen Species	Homo sapiens (Human)
Target Names	CSF1R

Image



Western Blot analysis of HT29 cells using c-Fms Polyclonal Antibody



Western Blot analysis of HT29 cells using c-Fms Polyclonal Antibody