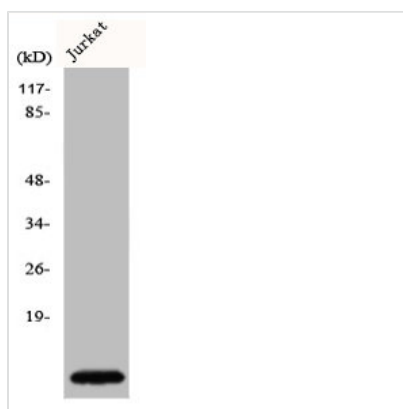




CKS1B Antibody

Product Code	CSB-PA001650
Storage	Upon receipt, store at -20°C or -80°C. Avoid repeated freeze.
Uniprot No.	P61024
Immunogen	Synthesized peptide derived from the N-terminal region of Human Cks1.
Raised In	Rabbit
Species Reactivity	Human, Mouse
Tested Applications	WB, IF, ELISA; WB:1:500-1:2000, IF:1:200-1:1000, ELISA:1:20000
Form	Liquid
Conjugate	Non-conjugated
Storage Buffer	Liquid in PBS containing 50% glycerol, 0.5% BSA and 0.02% sodium azide.
Purification Method	The antibody was affinity-purified from rabbit antiserum by affinity-chromatography using epitope-specific immunogen.
Isotype	IgG
Alias	CKS1B; CKS1; PNAS-143; PNAS-16; Cyclin-dependent kinases regulatory subunit 1; CKS-1
Immunogen Species	Homo sapiens (Human)
Target Names	CKS1B

Image



Western Blot analysis of Jurkat cells using Cks1 Polyclonal Antibody

Usage

For Research Use Only. Not for use in diagnostic or therapeutic procedures.