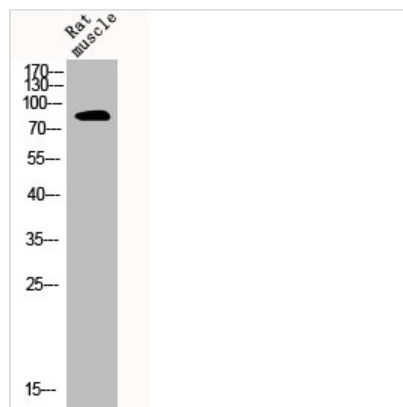




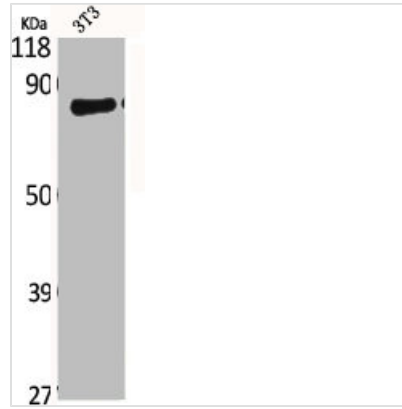
CLCN4 Antibody

Product Code	CSB-PA001674
Storage	Upon receipt, store at -20°C or -80°C. Avoid repeated freeze.
Uniprot No.	P51793
Immunogen	Synthesized peptide derived from the Internal region of Human CLC-4.
Raised In	Rabbit
Species Reactivity	Human,Mouse,Rat
Tested Applications	WB, IF, ELISA; WB:1:500-1:2000, IF:1:200-1:1000, ELISA:1:40000
Form	Liquid
Conjugate	Non-conjugated
Storage Buffer	Liquid in PBS containing 50% glycerol, 0.5% BSA and 0.02% sodium azide.
Purification Method	The antibody was affinity-purified from rabbit antiserum by affinity-chromatography using epitope-specific immunogen.
Isotype	IgG
Alias	CLCN4; H(+)/Cl(-) exchange transporter 4; Chloride channel protein 4; CIC-4; Chloride transporter CIC-4
Immunogen Species	Homo sapiens (Human)
Target Names	CLCN4

Image



Western Blot analysis of RAT-MUSCLE cells using CLC-4 Polyclonal Antibody



Western Blot analysis of NIH-3T3 cells using CLC-4 Polyclonal Antibody

Usage

For Research Use Only. Not for use in diagnostic or therapeutic procedures.