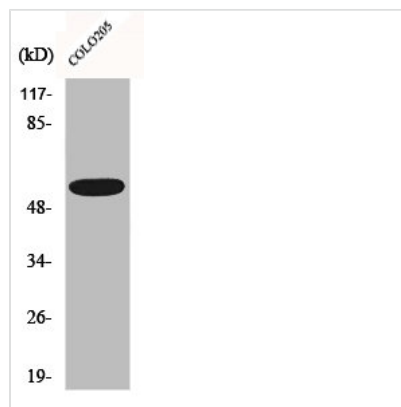




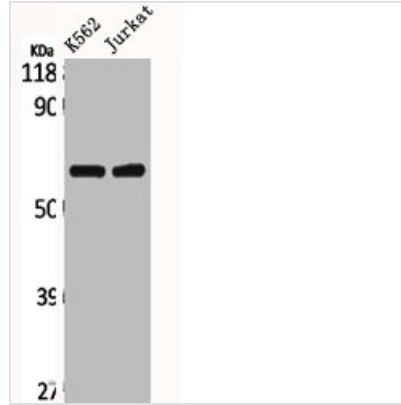
CLCC1 Antibody

Product Code	CSB-PA001687
Storage	Upon receipt, store at -20°C or -80°C. Avoid repeated freeze.
Uniprot No.	Q96S66
Immunogen	Synthesized peptide derived from the Internal region of Human CLCC1.
Raised In	Rabbit
Species Reactivity	Human
Tested Applications	WB, IF, ELISA; WB:1:500-1:2000, IF:1:200-1:1000, ELISA:1:40000
Form	Liquid
Conjugate	Non-conjugated
Storage Buffer	Liquid in PBS containing 50% glycerol, 0.5% BSA and 0.02% sodium azide.
Purification Method	The antibody was affinity-purified from rabbit antiserum by affinity-chromatography using epitope-specific immunogen.
Isotype	IgG
Alias	CLCC1; KIAA0761; MCLC; Chloride channel CLIC-like protein 1; Mid-1-related chloride channel protein 1
Immunogen Species	Homo sapiens (Human)
Target Names	CLCC1

Image



Western Blot analysis of HepG2 cells using CLCC1 Polyclonal Antibody



Western Blot analysis of K562 Jurkat cells using CLCC1 Polyclonal Antibody

Usage

For Research Use Only. Not for use in diagnostic or therapeutic procedures.