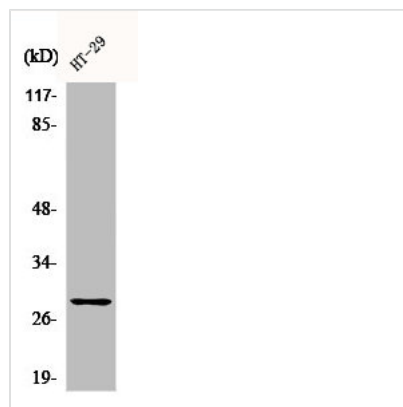




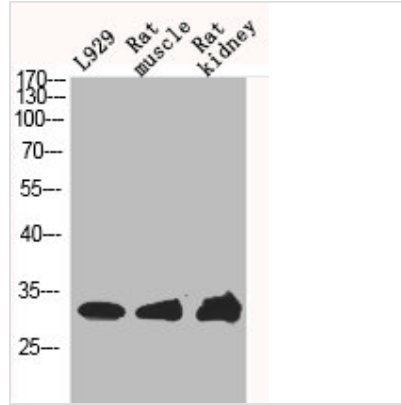
CLIC4 Antibody

Product Code	CSB-PA001691
Storage	Upon receipt, store at -20°C or -80°C. Avoid repeated freeze.
Uniprot No.	Q9Y696
Immunogen	Synthesized peptide derived from the N-terminal region of Human CLIC4.
Raised In	Rabbit
Species Reactivity	Human,Mouse,Rat
Tested Applications	WB, IHC, ELISA; WB:1:500-1:2000, IHC:1:100-1:300, ELISA:1:40000
Form	Liquid
Conjugate	Non-conjugated
Storage Buffer	Liquid in PBS containing 50% glycerol, 0.5% BSA and 0.02% sodium azide.
Purification Method	The antibody was affinity-purified from rabbit antiserum by affinity-chromatography using epitope-specific immunogen.
Isotype	IgG
Alias	CLIC4; Chloride intracellular channel protein 4; Intracellular chloride ion channel protein p64H1
Immunogen Species	Homo sapiens (Human)
Target Names	CLIC4

Image



Western Blot analysis of HT29 cells using CLIC4 Polyclonal Antibody



Western Blot analysis of L929 RAT-MUScle rat-kidney cells using CLIC4 Polyclonal Antibody

Usage

For Research Use Only. Not for use in diagnostic or therapeutic procedures.