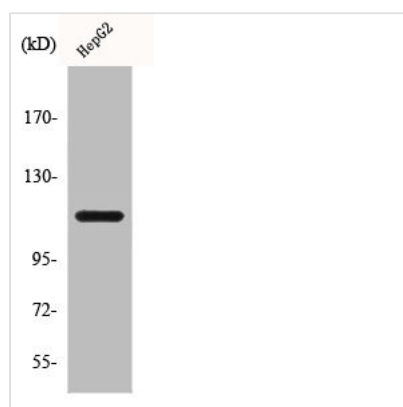




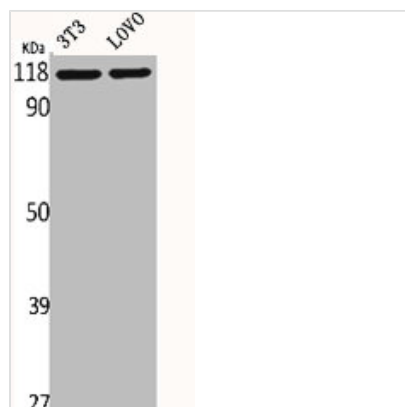
CLIP2 Antibody

Product Code	CSB-PA001692
Storage	Upon receipt, store at -20°C or -80°C. Avoid repeated freeze.
Uniprot No.	Q9UDT6
Immunogen	Synthesized peptide derived from the C-terminal region of Human CLIP-115.
Raised In	Rabbit
Species Reactivity	Human,Mouse,Rat
Tested Applications	WB, ELISA; WB:1:500-1:2000, ELISA:1:5000
Form	Liquid
Conjugate	Non-conjugated
Storage Buffer	Liquid in PBS containing 50% glycerol, 0.5% BSA and 0.02% sodium azide.
Purification Method	The antibody was affinity-purified from rabbit antiserum by affinity-chromatography using epitope-specific immunogen.
Isotype	IgG
Alias	CLIP2; CYLN2; KIAA0291; WBSCR3; WBSCR4; WSCR4; CAP-Gly domain-containing linker protein 2; Cytoplasmic linker protein 115; CLIP-115; Cytoplasmic linker protein 2; Williams-Beuren syndrome chromosomal region 3 protein; Williams-Beuren syndro
Immunogen Species	Homo sapiens (Human)
Target Names	CLIP2

Image



Western Blot analysis of A549 cells using CLIP-115 Polyclonal Antibody



Western Blot analysis of NIH-3T3 LOVO cells
using CLIP-115 Polyclonal Antibody