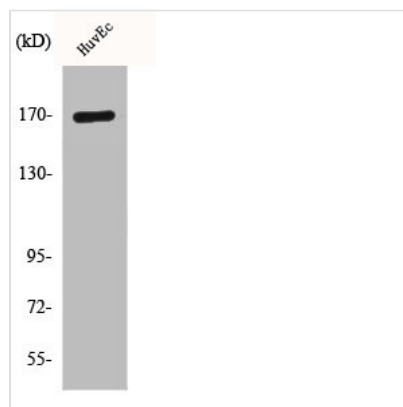




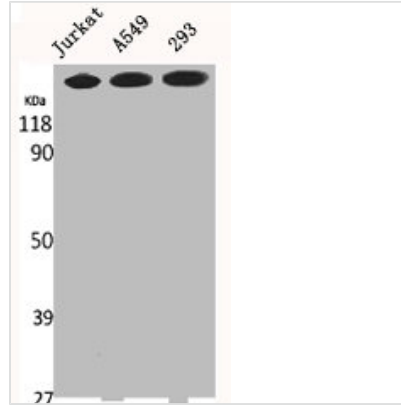
CLIP1 Antibody

Product Code	CSB-PA001702
Storage	Upon receipt, store at -20°C or -80°C. Avoid repeated freeze.
Uniprot No.	P30622
Immunogen	Synthesized peptide derived from the C-terminal region of Human CLIP-170.
Raised In	Rabbit
Species Reactivity	Human, Mouse, Rat
Tested Applications	WB, ELISA; WB:1:500-1:2000, ELISA:1:20000
Form	Liquid
Conjugate	Non-conjugated
Storage Buffer	Liquid in PBS containing 50% glycerol, 0.5% BSA and 0.02% sodium azide.
Purification Method	The antibody was affinity-purified from rabbit antiserum by affinity-chromatography using epitope-specific immunogen.
Isotype	IgG
Alias	CLIP1; CYLN1; RSN; CAP-Gly domain-containing linker protein 1; Cytoplasmic linker protein 1; Cytoplasmic linker protein 170 alpha-2; CLIP-170; Reed-Sternberg intermediate filament-associated protein; Restin
Immunogen Species	Homo sapiens (Human)
Target Names	CLIP1

Image



Western Blot analysis of RAW264.7 cells using CLIP-170 Polyclonal Antibody



Western Blot analysis of Jurkat A549 293 cells using CLIP-170 Polyclonal Antibody

Usage

For Research Use Only. Not for use in diagnostic or therapeutic procedures.