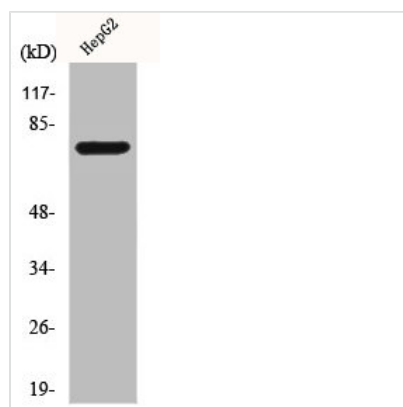




CLIP4 Antibody

Product Code	CSB-PA001716
Storage	Upon receipt, store at -20°C or -80°C. Avoid repeated freeze.
Uniprot No.	Q8N3C7
Immunogen	Synthesized peptide derived from the Internal region of Human CLIP4.
Raised In	Rabbit
Species Reactivity	Human
Tested Applications	WB, ELISA; WB:1:500-1:2000, ELISA:1:40000
Form	Liquid
Conjugate	Non-conjugated
Storage Buffer	Liquid in PBS containing 50% glycerol, 0.5% BSA and 0.02% sodium azide.
Purification Method	The antibody was affinity-purified from rabbit antiserum by affinity-chromatography using epitope-specific immunogen.
Isotype	IgG
Alias	CLIP4; RSNL2; CAP-Gly domain-containing linker protein 4; Restin-like protein 2
Immunogen Species	Homo sapiens (Human)
Target Names	CLIP4

Image



Western Blot analysis of Jurkat cells using CLIP4 Polyclonal Antibody

Usage

For Research Use Only. Not for use in diagnostic or therapeutic procedures.