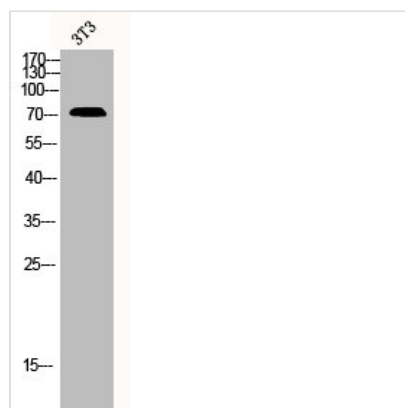




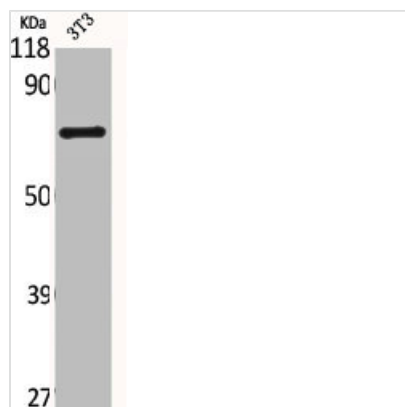
SLC28A2 Antibody

Product Code	CSB-PA001737
Storage	Upon receipt, store at -20°C or -80°C. Avoid repeated freeze.
Uniprot No.	O43868
Immunogen	Synthesized peptide derived from the Internal region of Human CNT2.
Raised In	Rabbit
Species Reactivity	Human,Mouse,Rat
Tested Applications	WB, IHC, ELISA; WB:1:500-1:2000, IHC:1:100-1:300, ELISA:1:10000
Form	Liquid
Conjugate	Non-conjugated
Storage Buffer	Liquid in PBS containing 50% glycerol, 0.5% BSA and 0.02% sodium azide.
Purification Method	The antibody was affinity-purified from rabbit antiserum by affinity-chromatography using epitope-specific immunogen.
Isotype	IgG
Alias	SLC28A2; CNT2; Sodium/nucleoside cotransporter 2; Concentrative nucleoside transporter 2; CNT 2; hCNT2; Na(+)/nucleoside cotransporter 2; Sodium-coupled nucleoside transporter 2; Sodium/purine nucleoside co-transporter; SPNT; Solute carrier
Immunogen Species	Homo sapiens (Human)
Target Names	SLC28A2

Image



Western Blot analysis of 3T3 cells using CNT2 Polyclonal Antibody



Western Blot analysis of NIH-3T3 cells using CNT2 Polyclonal Antibody