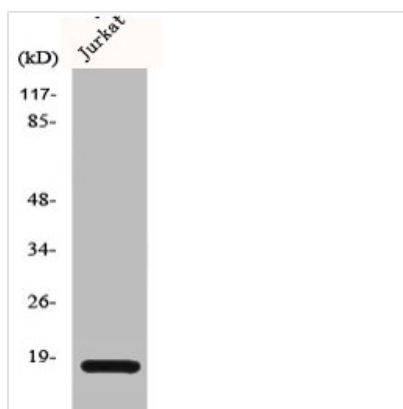




CFL1/CFL2 Antibody

Product Code	CSB-PA001740
Storage	Upon receipt, store at -20°C or -80°C. Avoid repeated freeze.
Uniprot No.	P23528/Q9Y281
Immunogen	Synthesized peptide derived from the Internal region of Human Cofilin.
Raised In	Rabbit
Species Reactivity	Human, Mouse, Rat
Tested Applications	WB, IF, ELISA; WB:1:500-1:2000, IF:1:200-1:1000, ELISA:1:40000
Form	Liquid
Conjugate	Non-conjugated
Storage Buffer	Liquid in PBS containing 50% glycerol, 0.5% BSA and 0.02% sodium azide.
Purification Method	The antibody was affinity-purified from rabbit antiserum by affinity-chromatography using epitope-specific immunogen.
Isotype	IgG
Alias	CFL1; CFL; Cofilin-1; 18 kDa phosphoprotein; p18; Cofilin; non-muscle isoform; CFL2; Cofilin-2; Cofilin, muscle isoform
Immunogen Species	Homo sapiens (Human)
Target Names	CFL1/CFL2

Image



Western Blot analysis of HeLa cells using Cofilin Polyclonal Antibody

Usage

For Research Use Only. Not for use in diagnostic or therapeutic procedures.