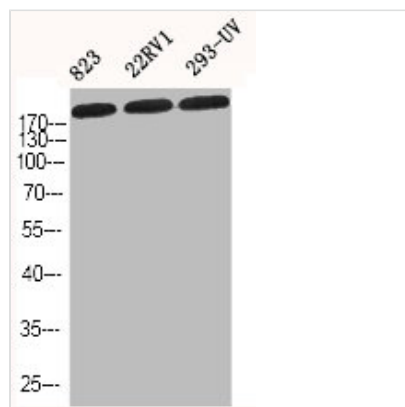




COL1A2 Antibody

Product Code	CSB-PA001742
Storage	Upon receipt, store at -20°C or -80°C. Avoid repeated freeze.
Uniprot No.	P08123
Immunogen	Synthesized peptide derived from the N-terminal region of Human COL1A2.
Raised In	Rabbit
Species Reactivity	Human,Mouse,Rat
Tested Applications	WB, IHC, IF, ELISA; IHC:1:100-1:300, IF:1:200-1:1000, ELISA:1:10000
Form	Liquid
Conjugate	Non-conjugated
Storage Buffer	Liquid in PBS containing 50% glycerol, 0.5% BSA and 0.02% sodium azide.
Purification Method	The antibody was affinity-purified from rabbit antiserum by affinity-chromatography using epitope-specific immunogen.
Isotype	IgG
Alias	COL1A2; Collagen alpha-2(I) chain; Alpha-2 type I collagen
Immunogen Species	Homo sapiens (Human)
Target Names	COL1A2

Image



Western Blot analysis of 823 22RV1 293-UV cells using COL1A2 Polyclonal Antibody