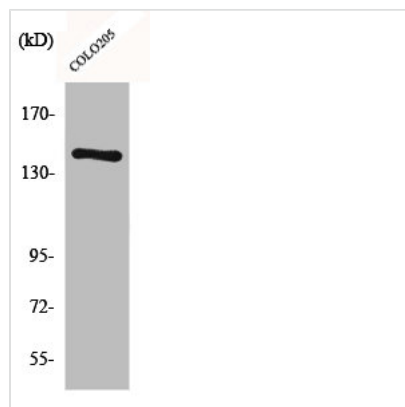




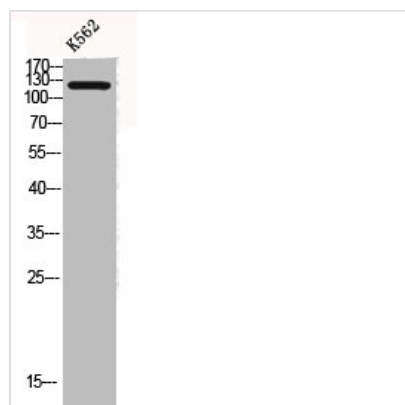
COL2A1 Antibody

Product Code	CSB-PA001745
Storage	Upon receipt, store at -20°C or -80°C. Avoid repeated freeze.
Uniprot No.	P02458
Immunogen	Synthesized peptide derived from the N-terminal region of Human COL2A1.
Raised In	Rabbit
Species Reactivity	Human,Mouse,Rat
Tested Applications	WB, IHC, IF, ELISA; WB:1:500-1:2000, IHC:1:100-1:300, IF:1:200-1:1000, ELISA:1:20000
Form	Liquid
Conjugate	Non-conjugated
Storage Buffer	Liquid in PBS containing 50% glycerol, 0.5% BSA and 0.02% sodium azide.
Purification Method	The antibody was affinity-purified from rabbit antiserum by affinity-chromatography using epitope-specific immunogen.
Isotype	IgG
Alias	COL2A1; Collagen alpha-1(II) chain; Alpha-1 type II collagen
Immunogen Species	Homo sapiens (Human)
Target Names	COL2A1

Image



Western Blot analysis of COLO205 cells using COL2A1 Polyclonal Antibody



Western Blot analysis of K562 cells using COL2A1 Polyclonal Antibody