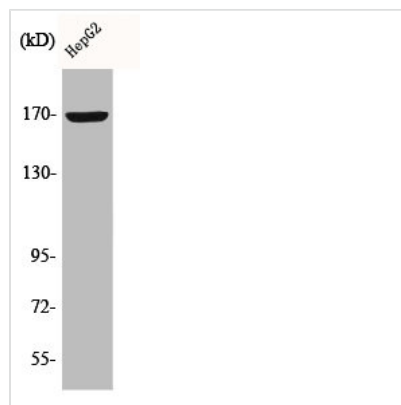




COL4A6 Antibody

Product Code	CSB-PA001750
Storage	Upon receipt, store at -20°C or -80°C. Avoid repeated freeze.
Uniprot No.	Q14031
Immunogen	Synthesized peptide derived from the C-terminal region of Human COL4A6.
Raised In	Rabbit
Species Reactivity	Human
Tested Applications	WB, IHC, IF, ELISA; WB:1:500-1:2000, IHC:1:100-1:300, IF:1:200-1:1000, ELISA:1:40000
Form	Liquid
Conjugate	Non-conjugated
Storage Buffer	Liquid in PBS containing 50% glycerol, 0.5% BSA and 0.02% sodium azide.
Purification Method	The antibody was affinity-purified from rabbit antiserum by affinity-chromatography using epitope-specific immunogen.
Isotype	IgG
Alias	COL4A6Collagen alpha-6(IV) chain antibody
Immunogen Species	Homo sapiens (Human)
Target Names	COL4A6

Image



Western Blot analysis of HepG2 cells using COL4A6 Polyclonal Antibody

Usage

For Research Use Only. Not for use in diagnostic or therapeutic procedures.