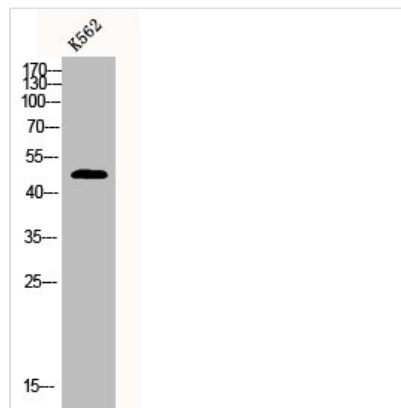




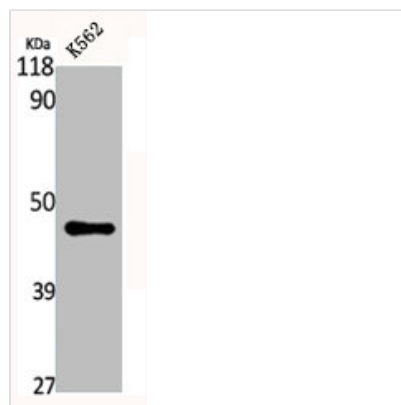
CPA1 Antibody

Product Code	CSB-PA001768
Storage	Upon receipt, store at -20°C or -80°C. Avoid repeated freeze.
Uniprot No.	P15085
Immunogen	Synthesized peptide derived from the Internal region of Human CPA1.
Raised In	Rabbit
Species Reactivity	Human
Tested Applications	WB, IHC, ELISA; WB:1:500-1:2000, IHC:1:100-1:300, ELISA:1:40000
Form	Liquid
Conjugate	Non-conjugated
Storage Buffer	Liquid in PBS containing 50% glycerol, 0.5% BSA and 0.02% sodium azide.
Purification Method	The antibody was affinity-purified from rabbit antiserum by affinity-chromatography using epitope-specific immunogen.
Isotype	IgG
Alias	CPA1; CPA; Carboxypeptidase A1
Immunogen Species	Homo sapiens (Human)
Target Names	CPA1

Image



Western Blot analysis of K562 cells using CPA1 Polyclonal Antibody



Western Blot analysis of K562 cells using CPA1 Polyclonal Antibody

