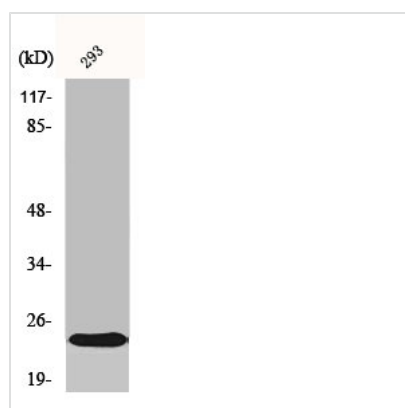




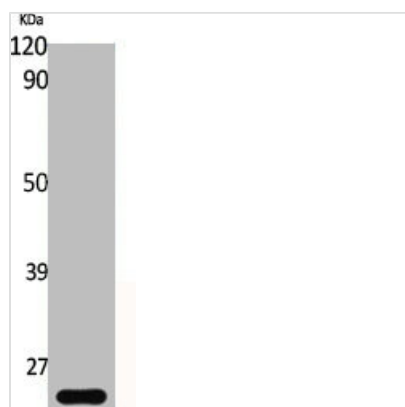
CRYAB Antibody

Product Code	CSB-PA001796
Storage	Upon receipt, store at -20°C or -80°C. Avoid repeated freeze.
Uniprot No.	P02511
Immunogen	Synthesized peptide derived from Human Crystallin-αB around the non-phosphorylation site of S19.
Raised In	Rabbit
Species Reactivity	Human,Mouse,Rat
Tested Applications	WB, IHC, ELISA; WB:1:500-1:2000, IHC:1:100-1:300, ELISA:1:5000
Form	Liquid
Conjugate	Non-conjugated
Storage Buffer	Liquid in PBS containing 50% glycerol, 0.5% BSA and 0.02% sodium azide.
Purification Method	The antibody was affinity-purified from rabbit antiserum by affinity-chromatography using epitope-specific immunogen.
Isotype	IgG
Alias	CRYAB; CRYA2; Alpha-crystallin B chain; Alpha(B)-crystallin; Heat shock protein beta-5; HspB5; Renal carcinoma antigen NY-REN-27; Rosenthal fiber component
Immunogen Species	Homo sapiens (Human)
Target Names	CRYAB

Image



Western Blot analysis of 293 cells using Crystallin-αB Polyclonal Antibody



Western Blot analysis of various cells using
Crystallin-αB Polyclonal Antibody