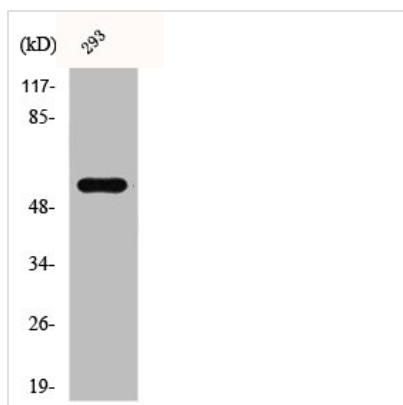




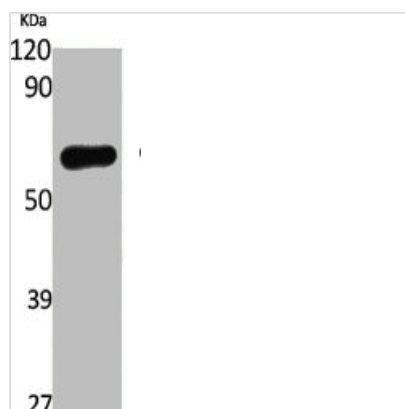
SRC Antibody

Product Code	CSB-PA001803
Storage	Upon receipt, store at -20°C or -80°C. Avoid repeated freeze.
Uniprot No.	P12931
Immunogen	Synthesized peptide derived from Human c-Src around the non-phosphorylation site of Y419.
Raised In	Rabbit
Species Reactivity	Human,Mouse,Rat
Tested Applications	WB, IHC, IF, ELISA; WB:1:500-1:2000, IHC:1:100-1:300, IF:1:200-1:1000, ELISA:1:40000
Form	Liquid
Conjugate	Non-conjugated
Storage Buffer	Liquid in PBS containing 50% glycerol, 0.5% BSA and 0.02% sodium azide.
Purification Method	The antibody was affinity-purified from rabbit antiserum by affinity-chromatography using epitope-specific immunogen.
Isotype	IgG
Alias	SRC; SRC1; Proto-oncogene tyrosine-protein kinase Src; Proto-oncogene c-Src; pp60c-src; p60-Src
Immunogen Species	Homo sapiens (Human)
Target Names	SRC

Image



Western Blot analysis of 293 cells using c-Src Polyclonal Antibody



Western Blot analysis of various cells using c-Src Polyclonal Antibody