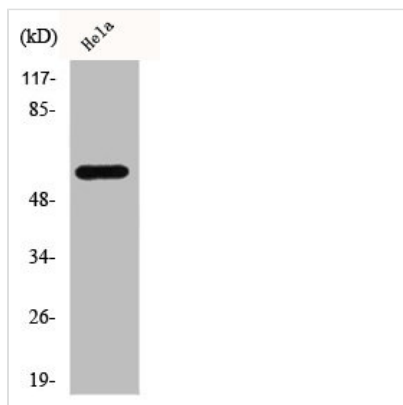




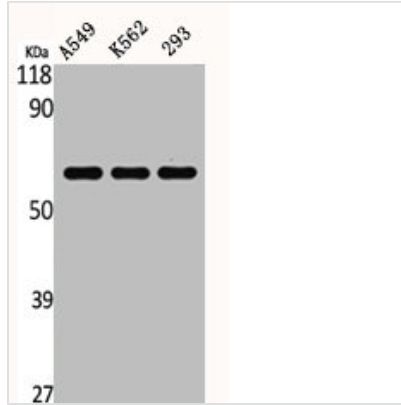
SRC Antibody

Product Code	CSB-PA001809
Storage	Upon receipt, store at -20°C or -80°C. Avoid repeated freeze.
Uniprot No.	P12931
Immunogen	Synthesized peptide derived from Human c-Src around the non-phosphorylation site of Y529.
Raised In	Rabbit
Species Reactivity	Human,Mouse,Rat
Tested Applications	WB, IHC, ELISA; WB:1:500-1:2000, IHC:1:100-1:300, ELISA:1:5000
Form	Liquid
Conjugate	Non-conjugated
Storage Buffer	Liquid in PBS containing 50% glycerol, 0.5% BSA and 0.02% sodium azide.
Purification Method	The antibody was affinity-purified from rabbit antiserum by affinity-chromatography using epitope-specific immunogen.
Isotype	IgG
Alias	SRC; SRC1; Proto-oncogene tyrosine-protein kinase Src; Proto-oncogene c-Src; pp60c-src; p60-Src
Immunogen Species	Homo sapiens (Human)
Target Names	SRC

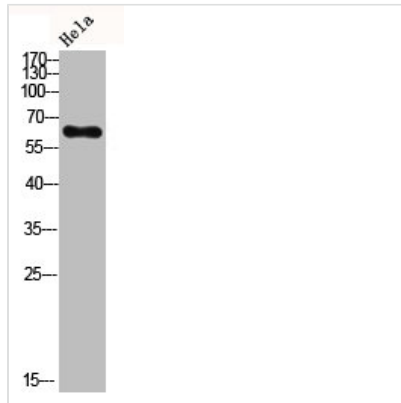
Image



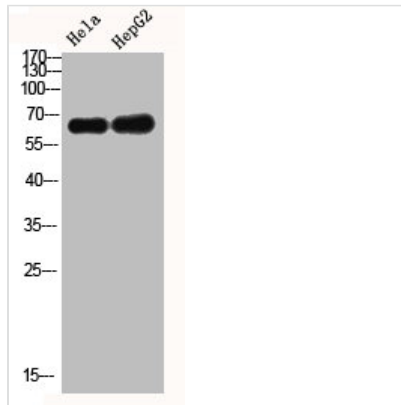
Western Blot analysis of HeLa cells using c-Src Polyclonal Antibody



Western Blot analysis of A549 K562 293 cells using c-Src Polyclonal Antibody



Western Blot analysis of hela using c-Src Polyclonal Antibody.



Western Blot analysis of HELA HEPG2 using c-Src Polyclonal Antibody

Usage

For Research Use Only. Not for use in diagnostic or therapeutic procedures.